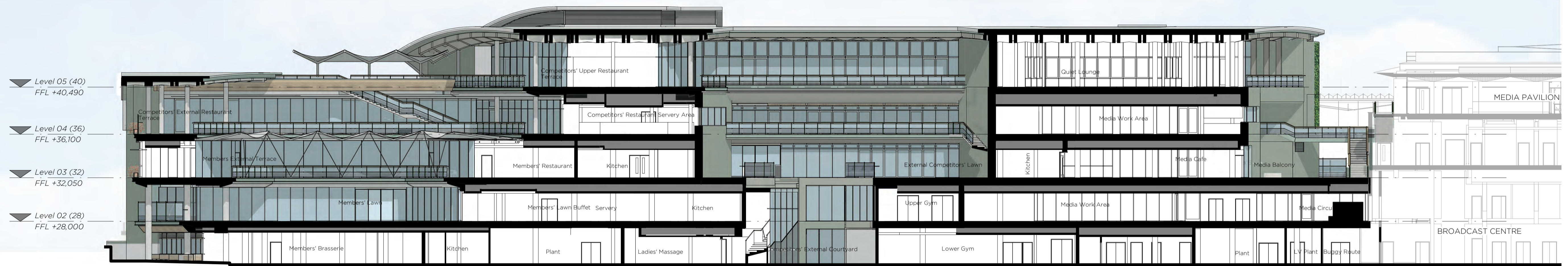


Key Plan

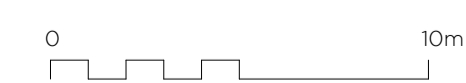


Planning Section FF

DISCLAIMER
CAD data is subject to undetectable alteration, either intentional or unintentional, due to, among other causes, transmission, conversion, media degradation, software error, or human alteration. Accordingly, all such data is provided to the parties for information purposes only and not as a record document. It is the responsibility of the user to compare all data with the record copy of the document(s), which would be in paper or pdf format. In the event there is a conflict between the record document(s) and the data file, the record document(s) shall prevail.

Rev.	Date	Description
PO1	28/10/2020	Issued for Planning

Notes
1. To be read in conjunction with all relevant information
2. Do not scale from drawing



LANGSTAFF DAY <small>ARCHITECTS</small>		<i>project</i> Millennium Building Project <i>for</i> AELTG <i>title</i> Proposed GA Sections - FF	<i>rev.</i> P01
		<i>address</i> 321 Edinburgh House, 170 Kennington Lane London SE11 5DP <i>e-mail</i> office@langstaffday.co.uk <i>suitability</i> S2 - For Information <i>scale</i> 200@A1	

This page is intentionally left blank